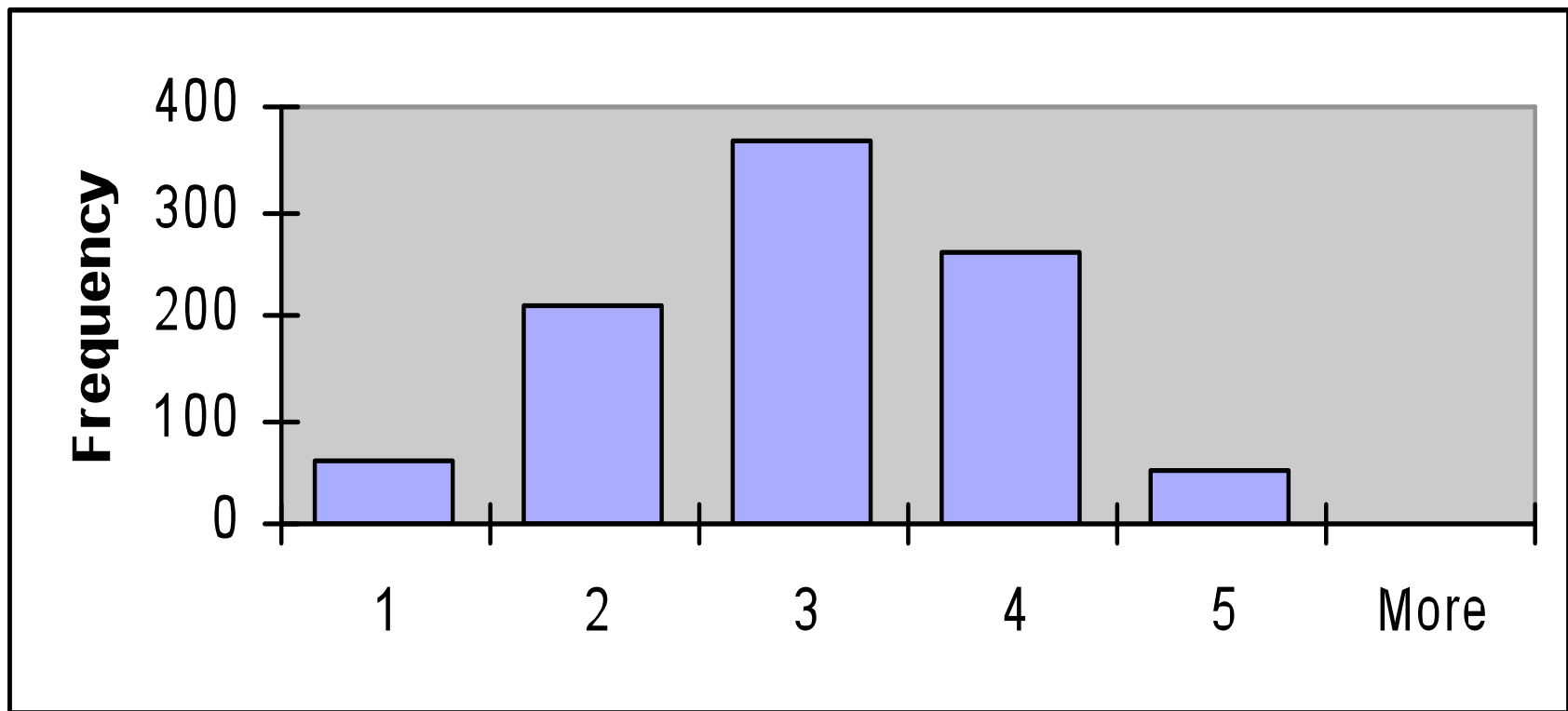


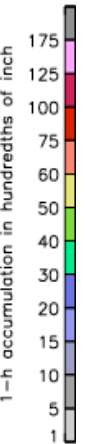
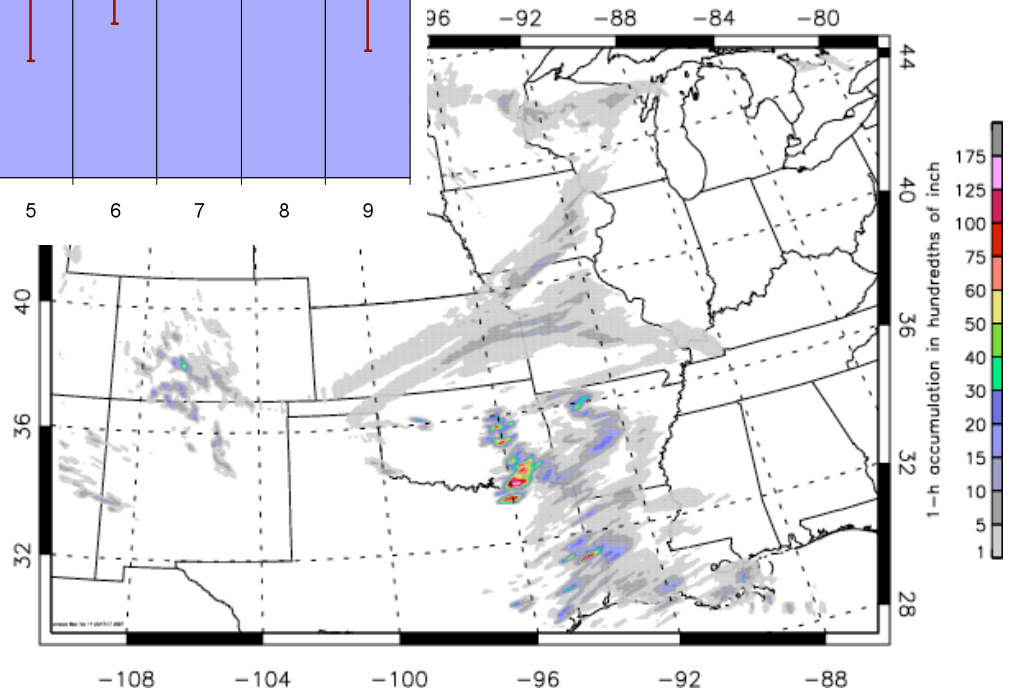
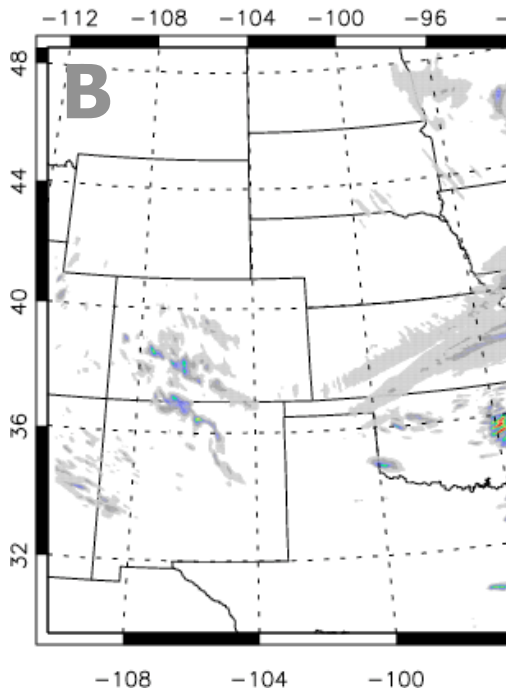
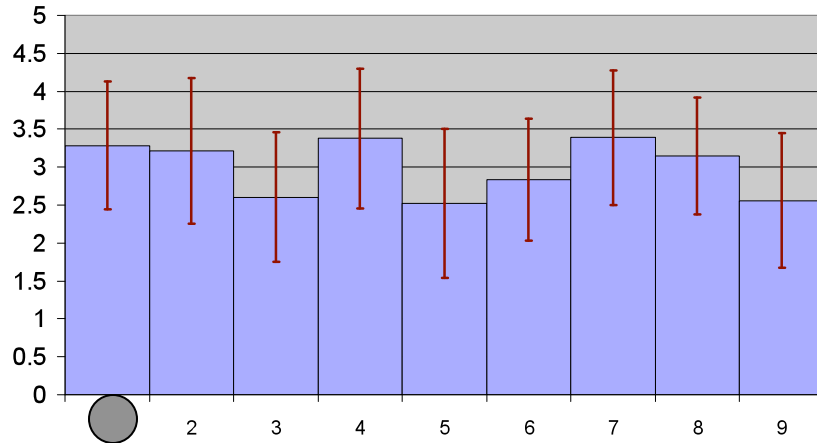
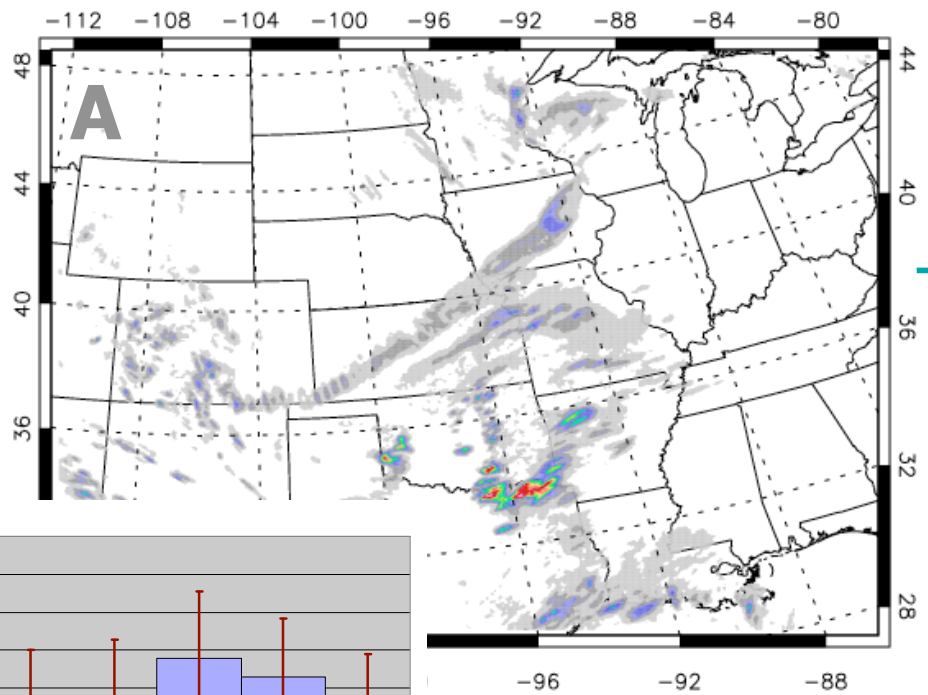
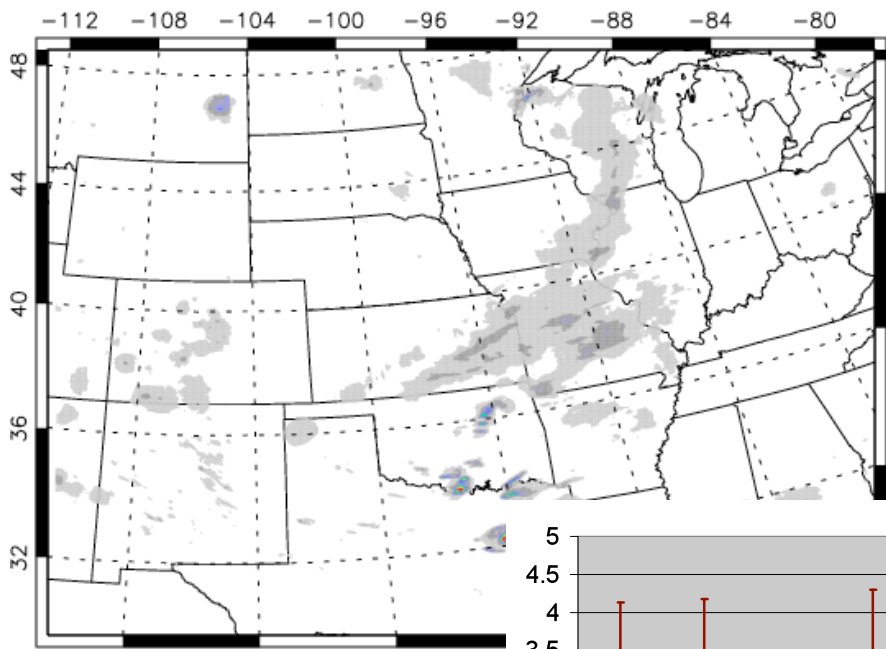
Subjective Forecast Quality

1. **Failure.** Forecast has no value.
2. **Poor.**
3. **Okay.** Forecast shows some skill
4. **Good.**
5. **Excellent.** All important features forecast correctly.

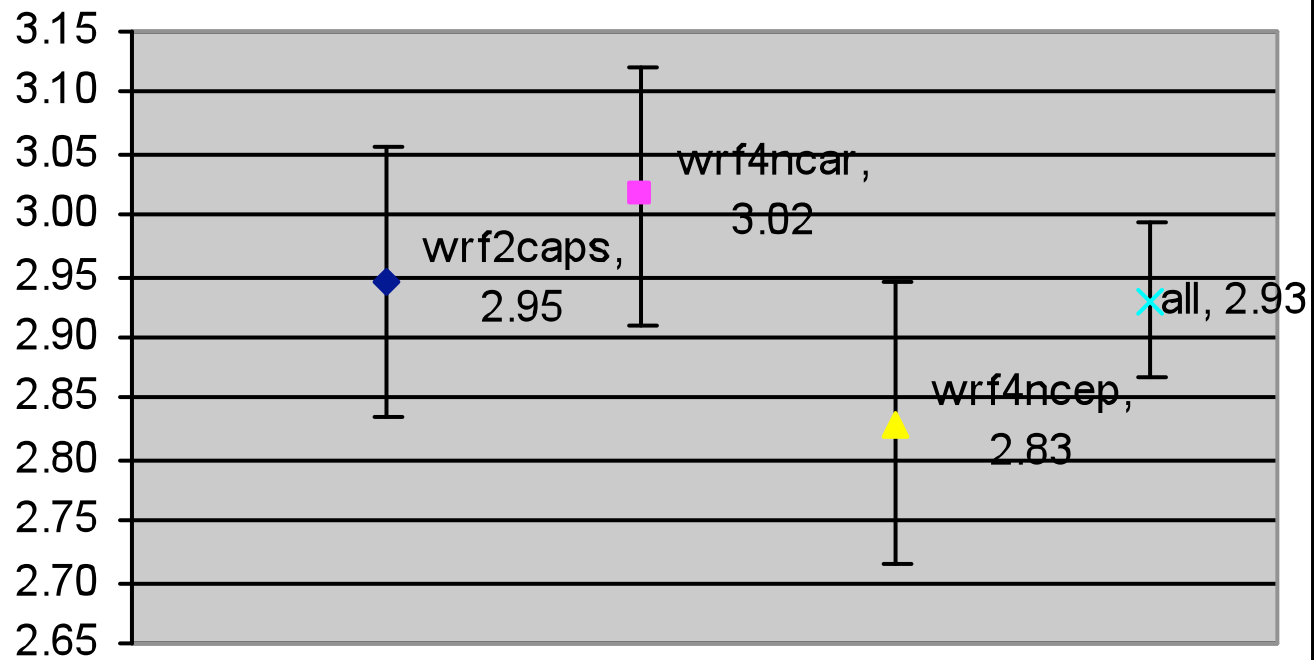
All scores



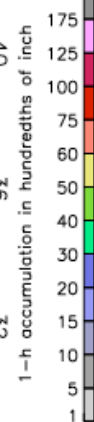
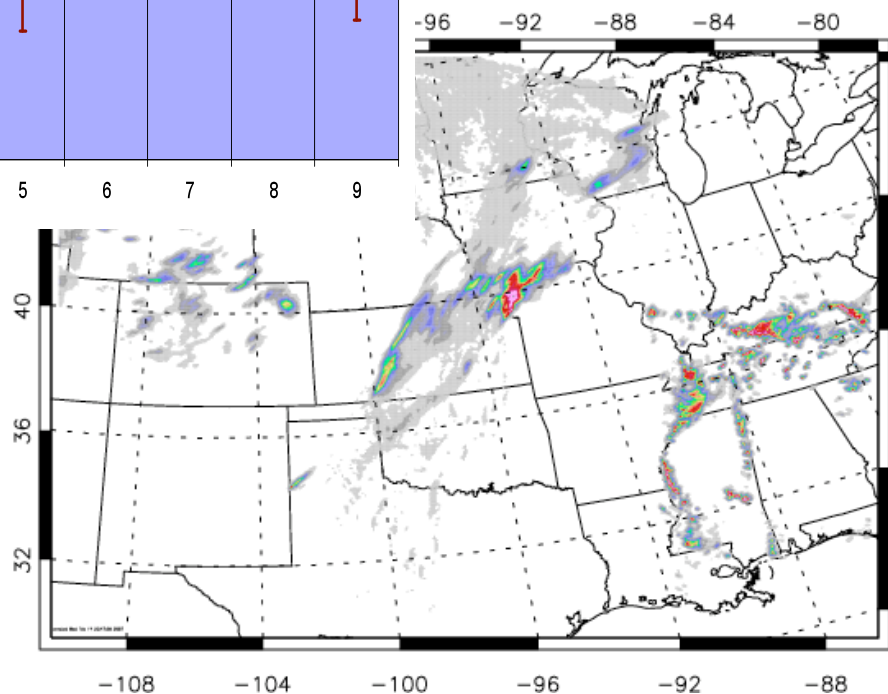
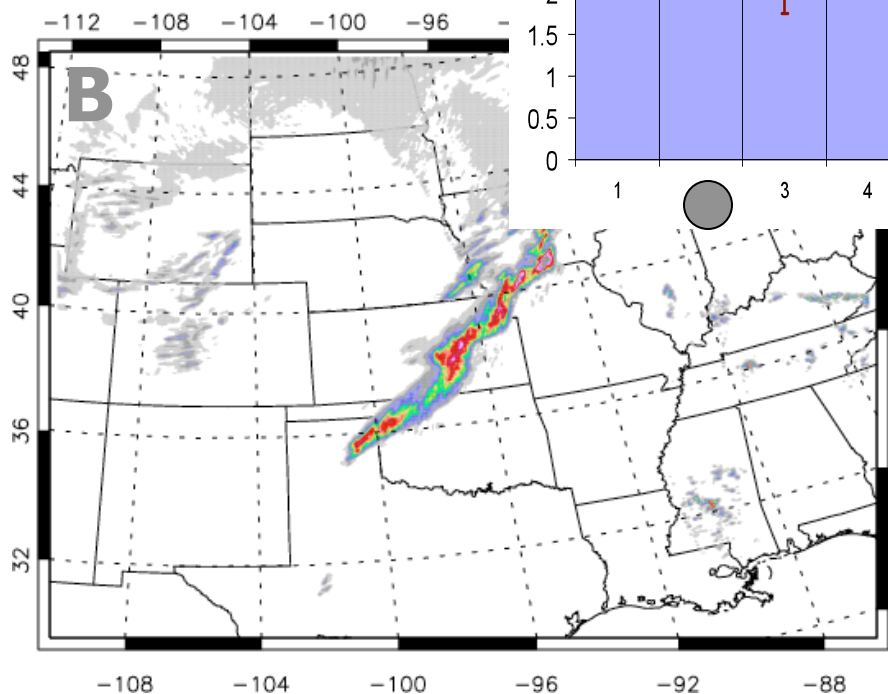
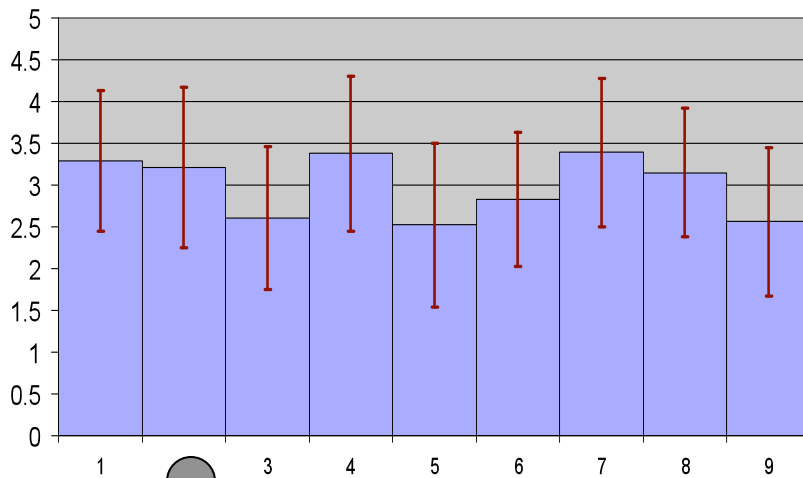
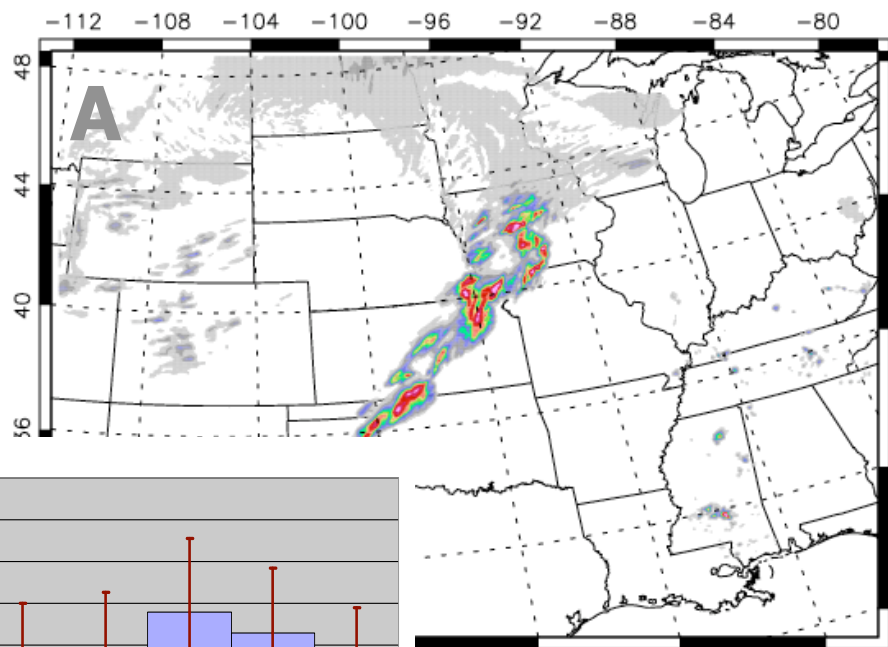
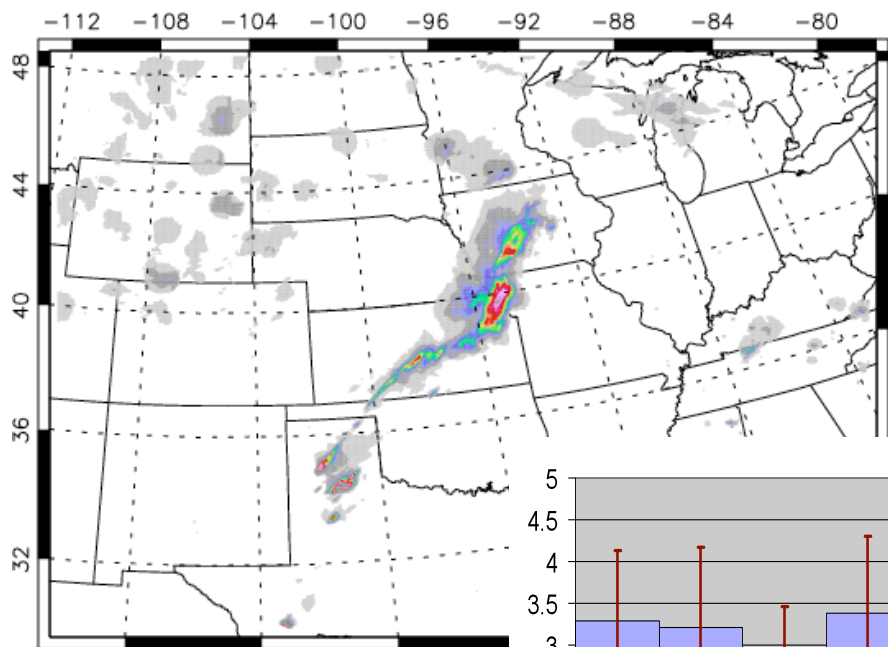
26 April 2005



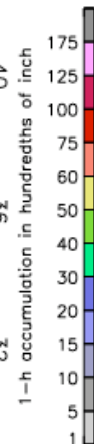
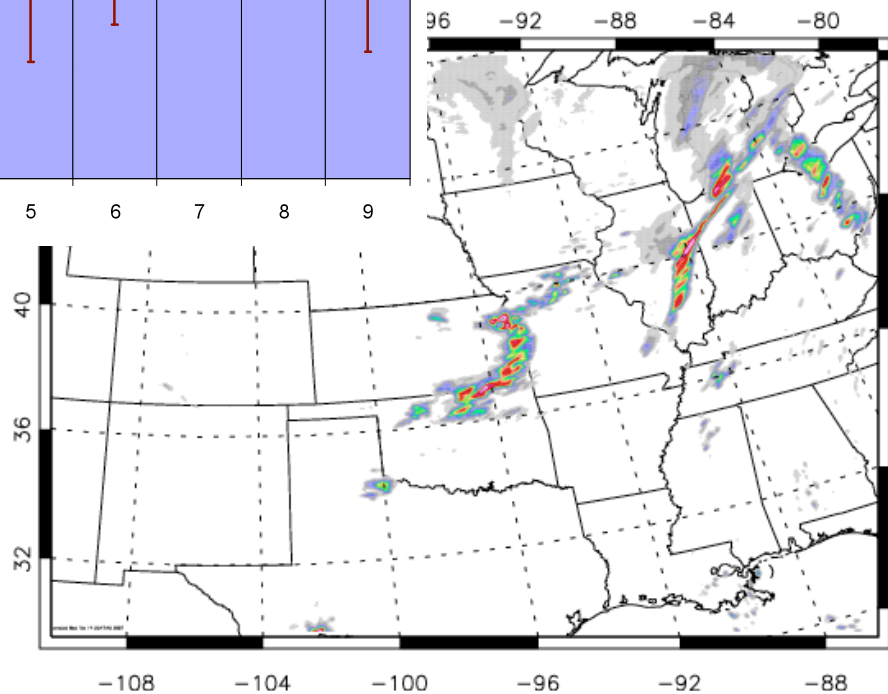
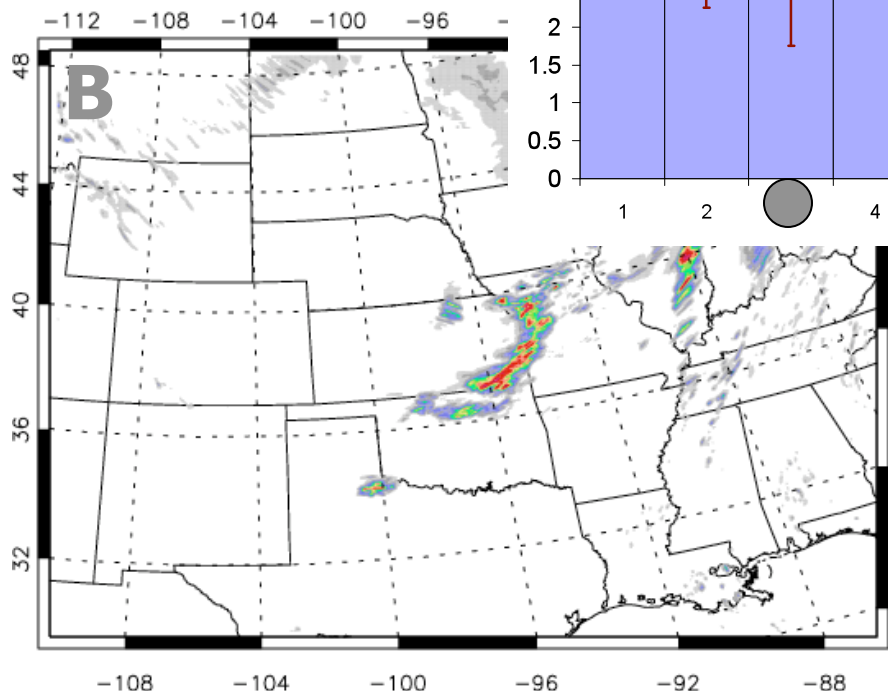
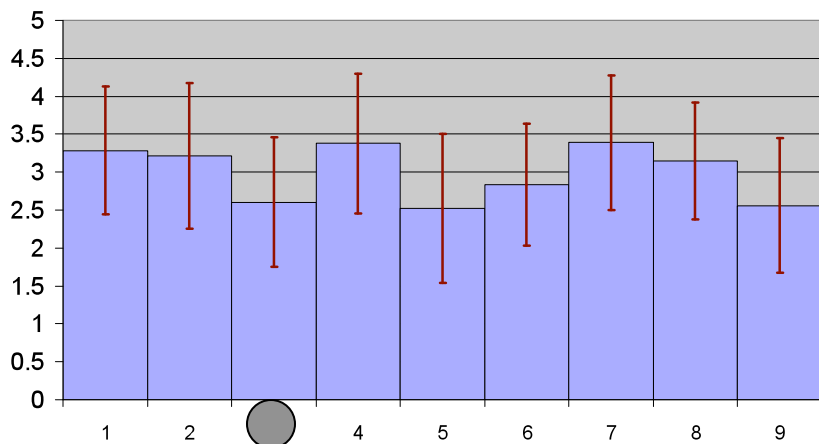
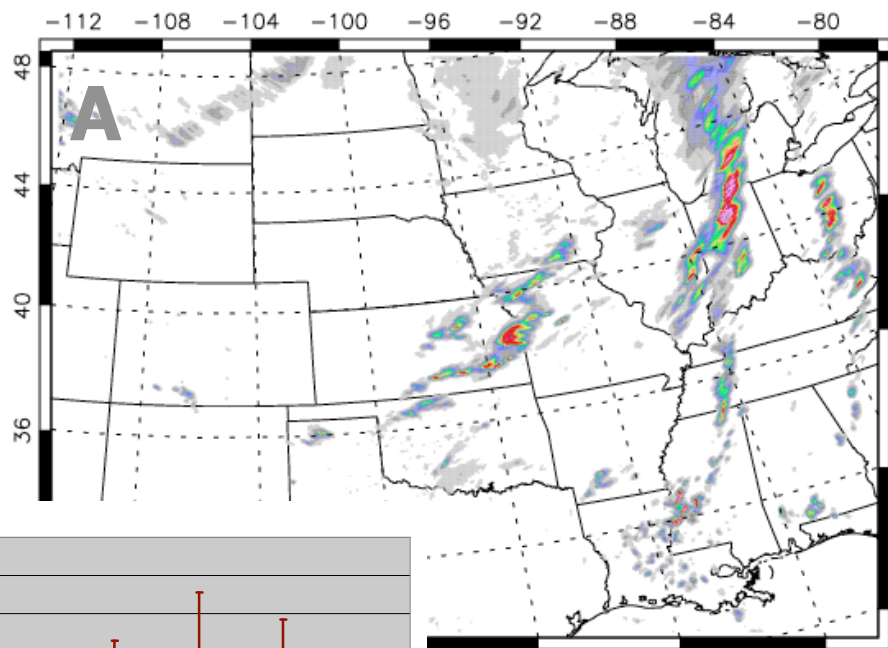
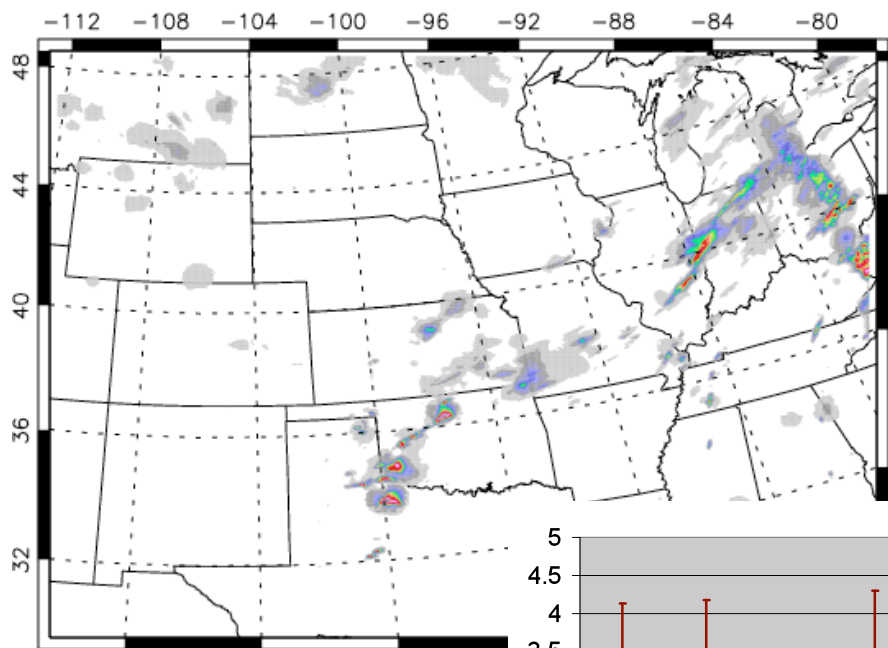
mean (2-trial) score for each model
with 95% confidence interval



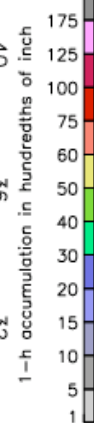
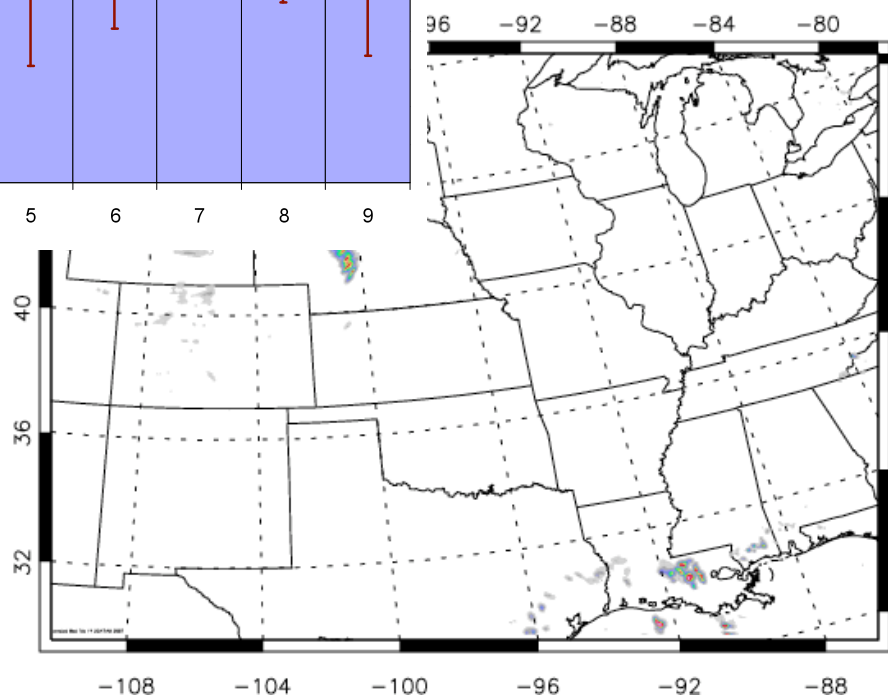
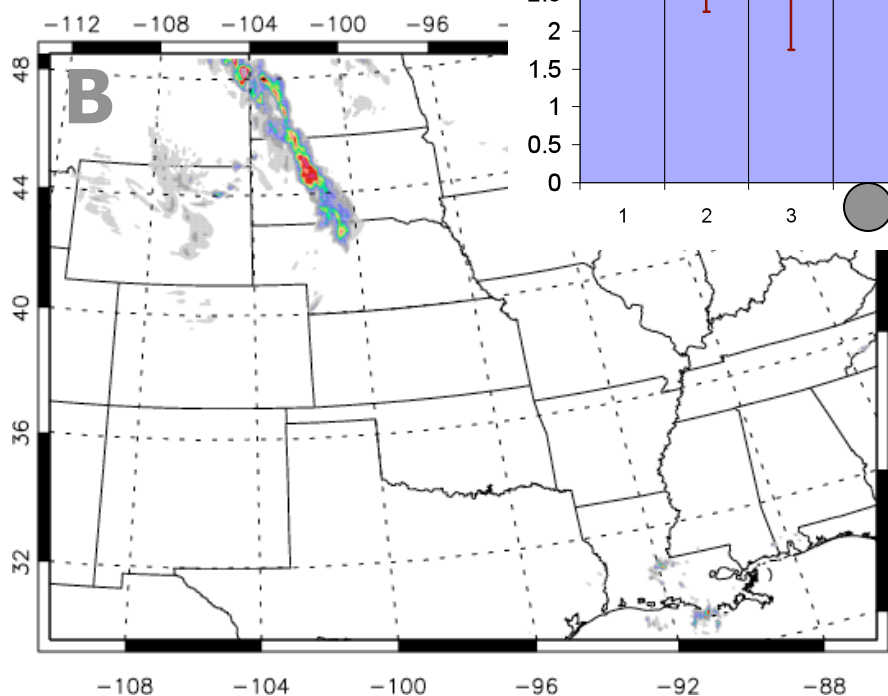
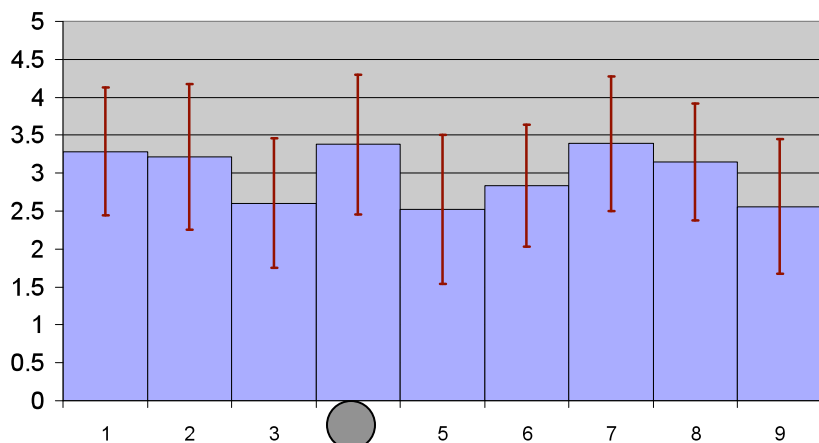
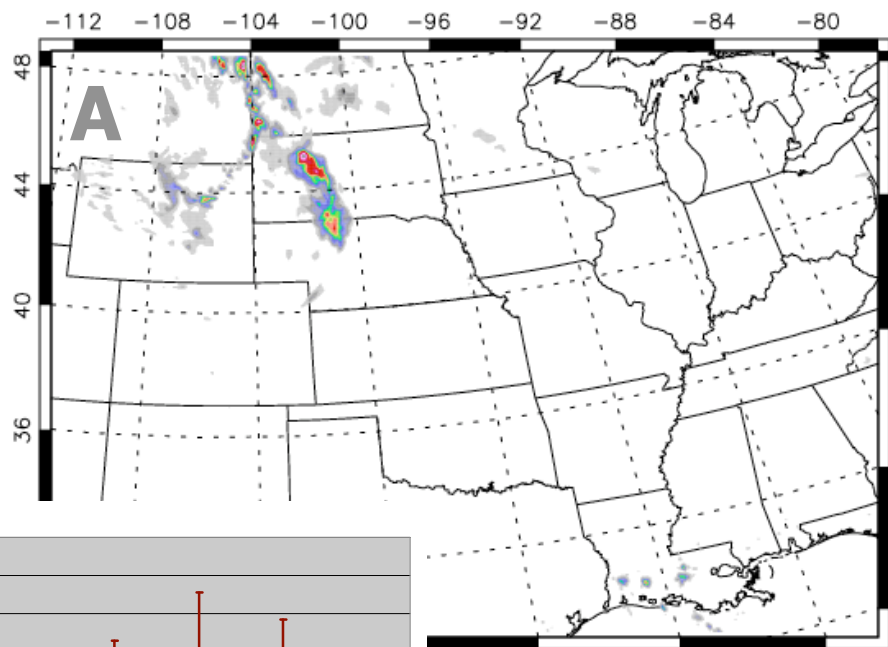
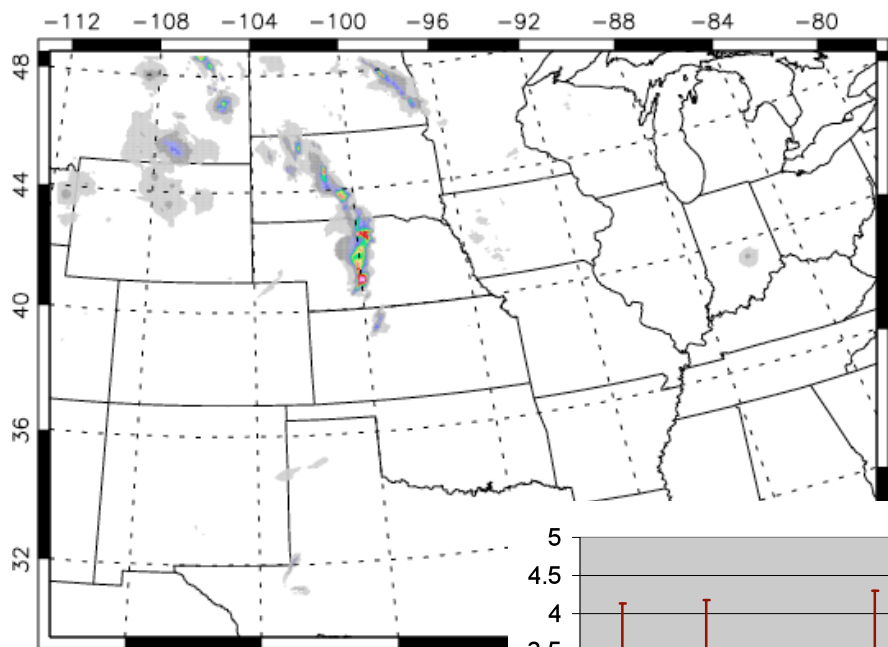
13 May 2005



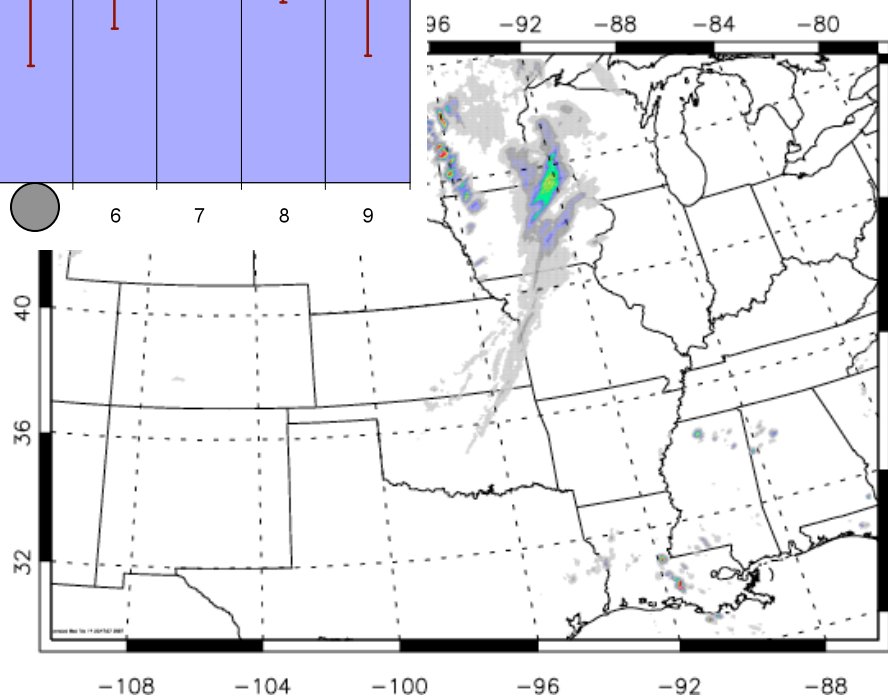
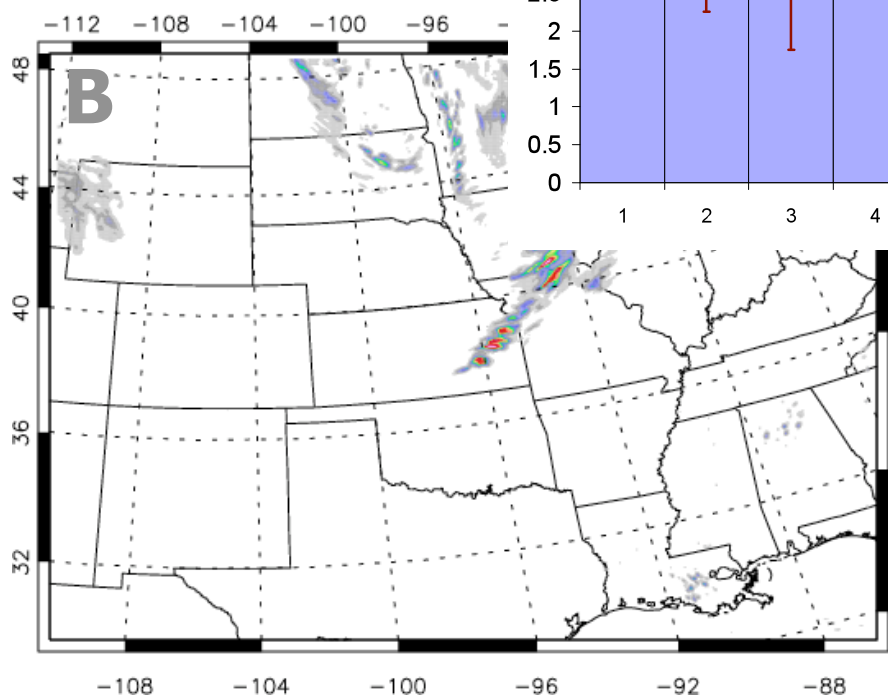
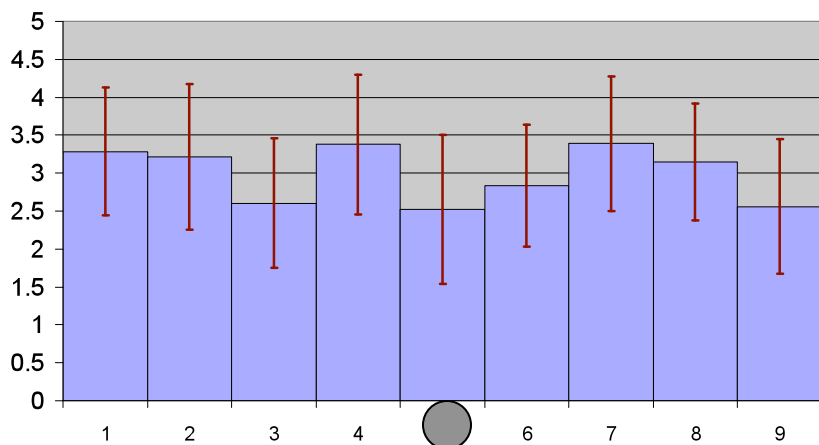
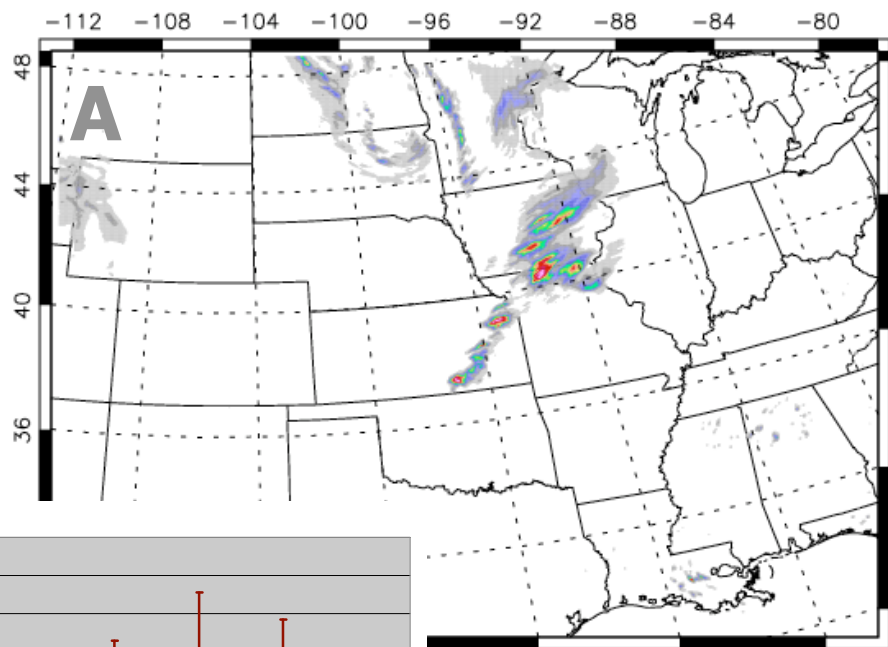
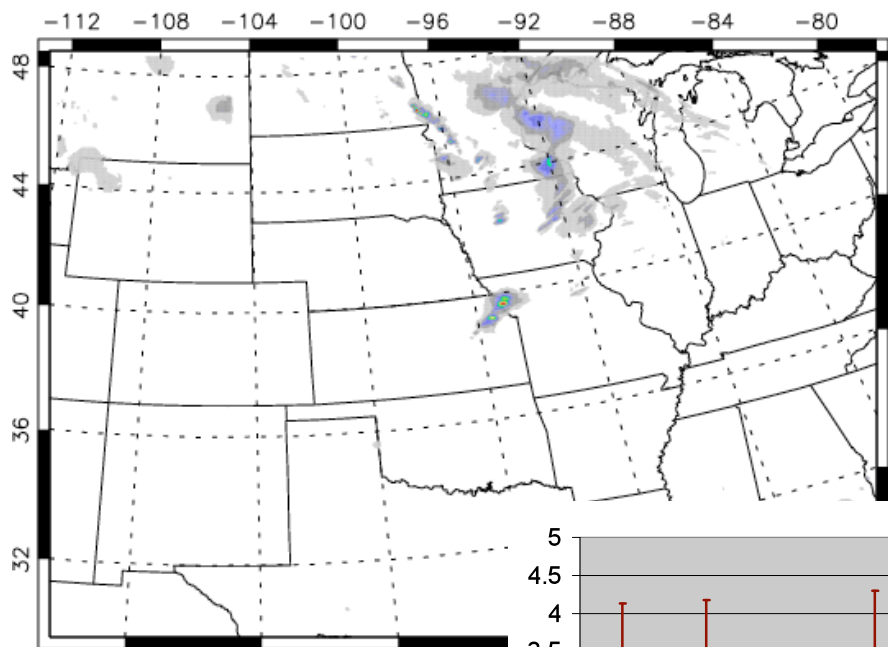
14 May 2005



18 May 2005

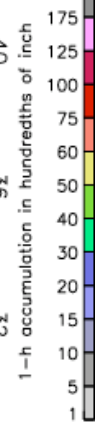
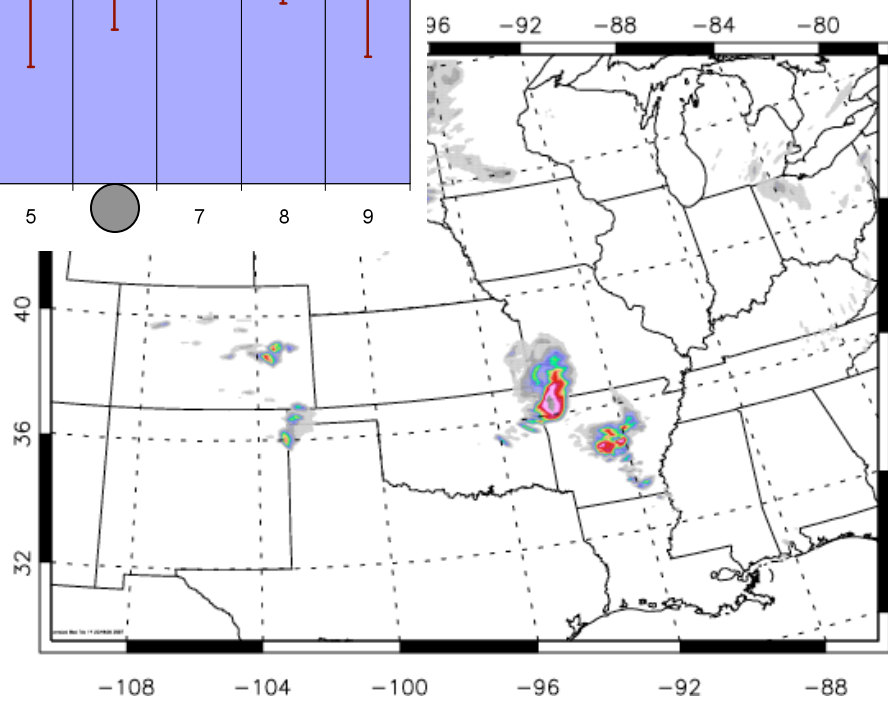
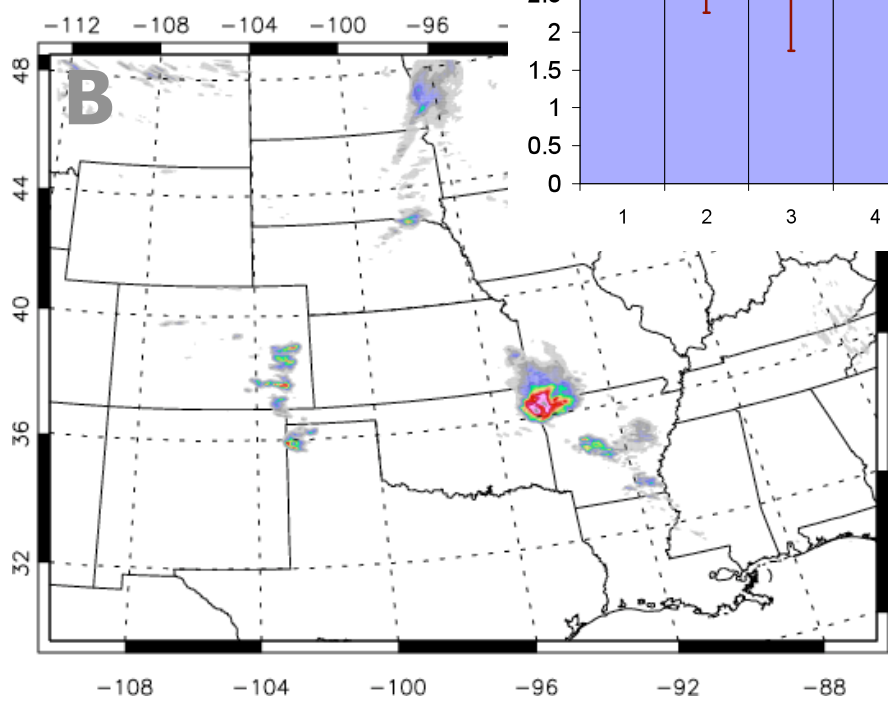
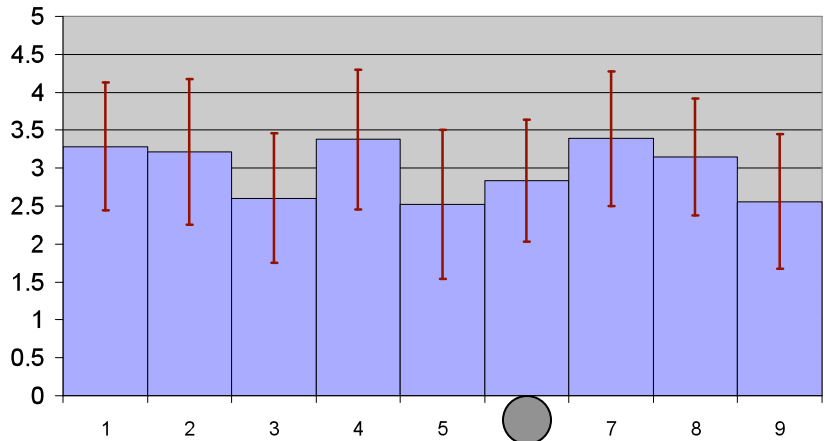
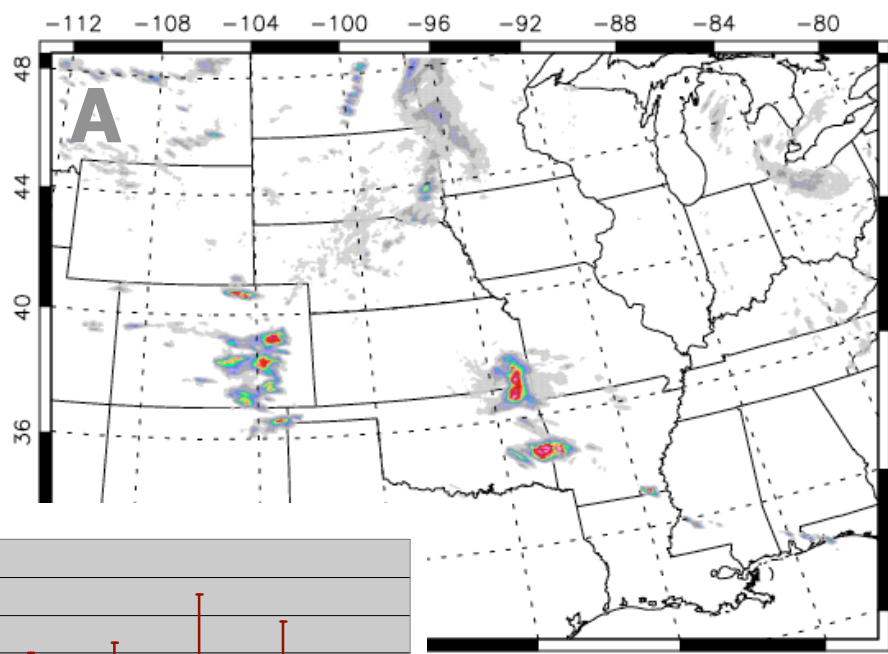
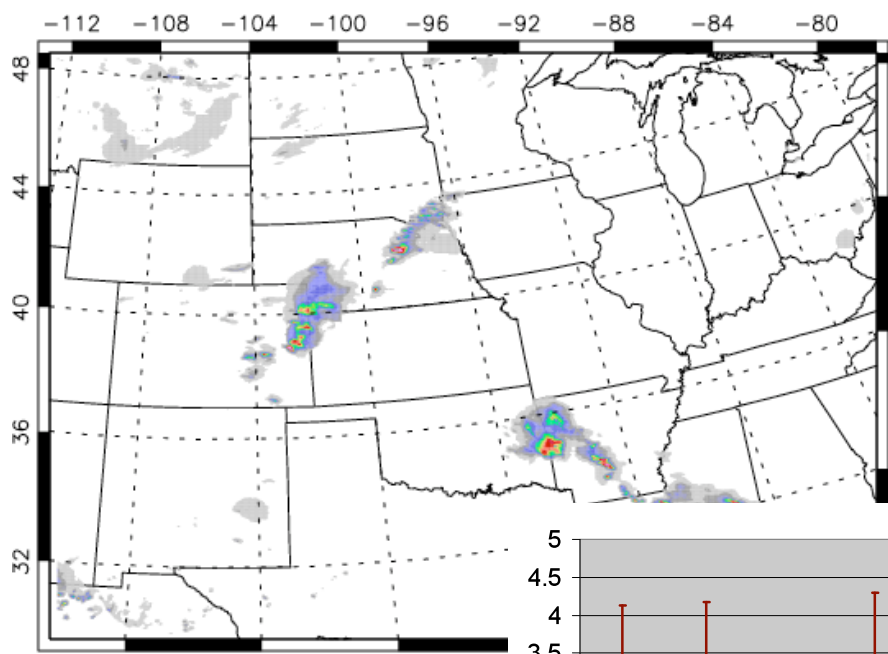


19 May 2005

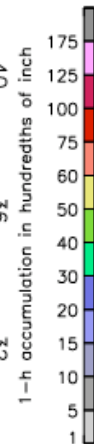
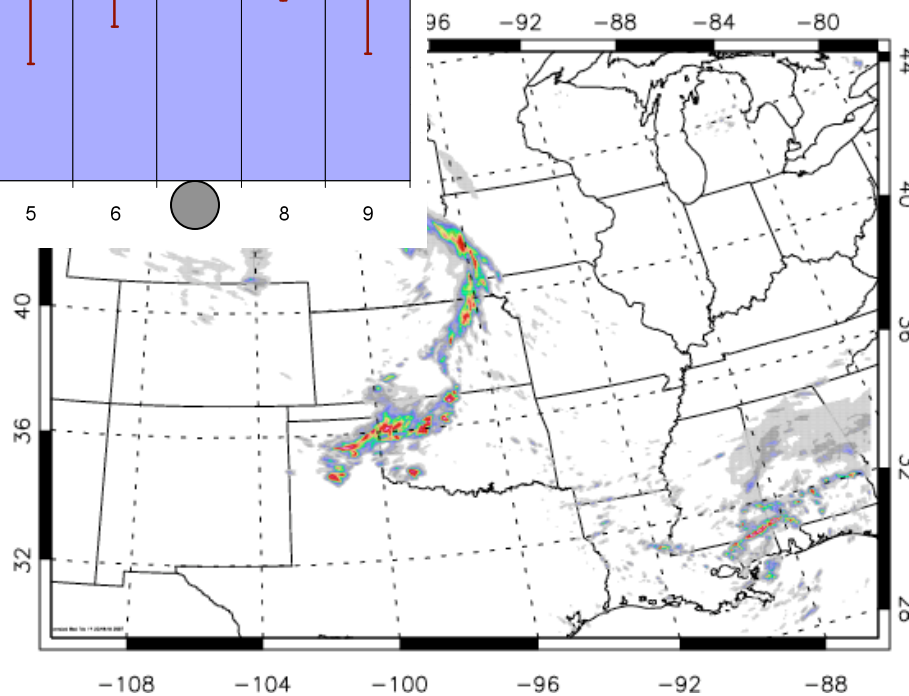
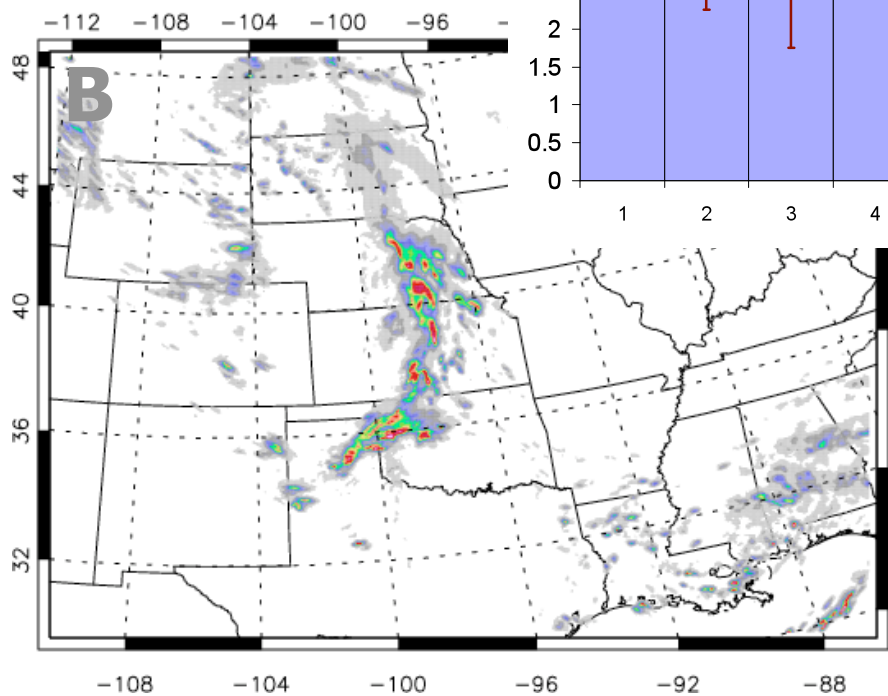
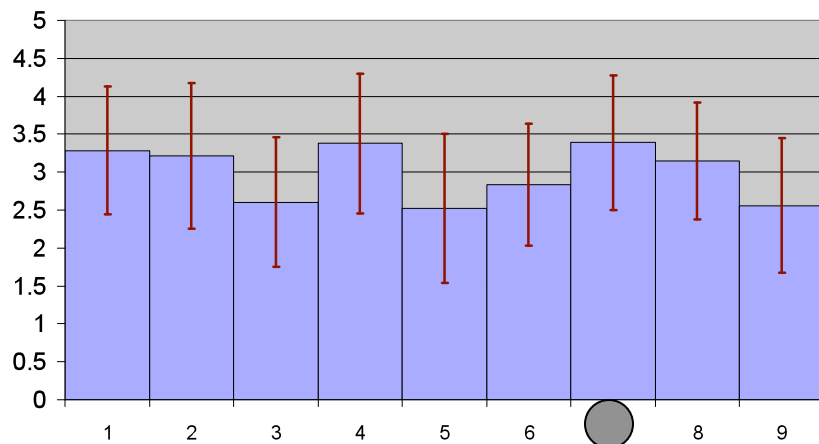
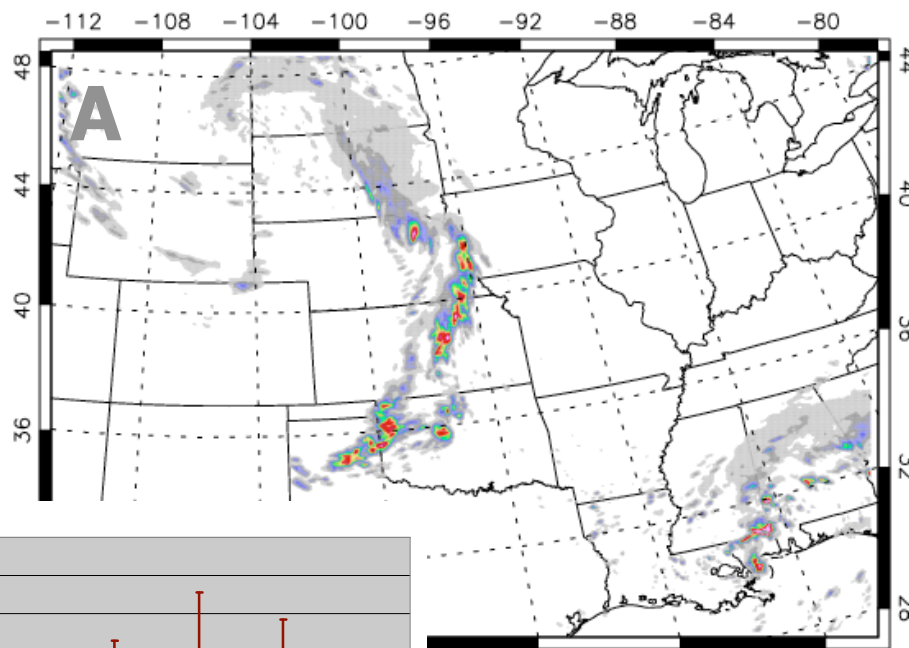
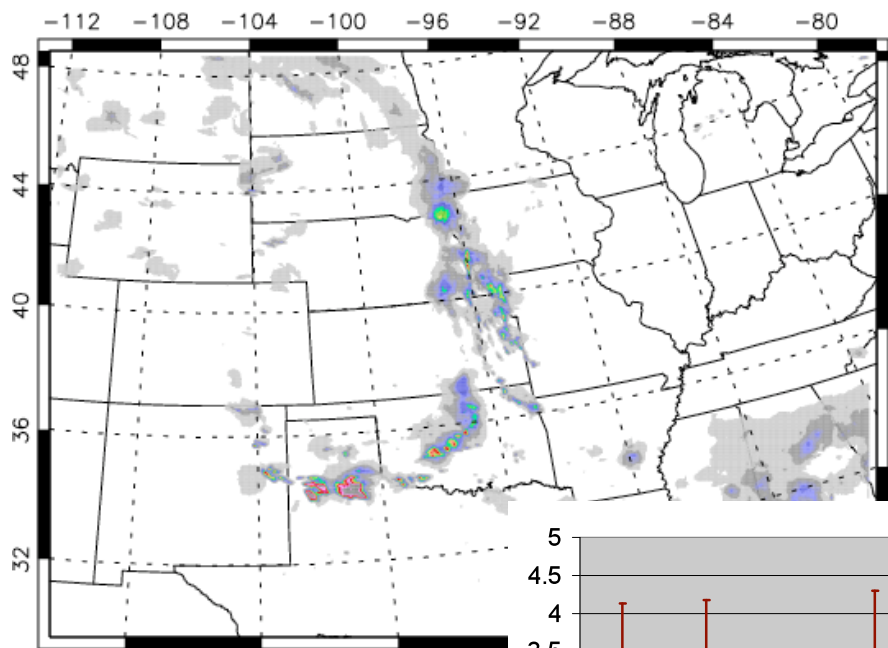


175
125
100
75
60
50
40
30
20
15
10
5
1

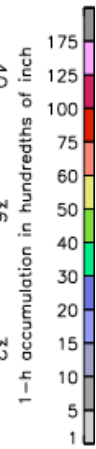
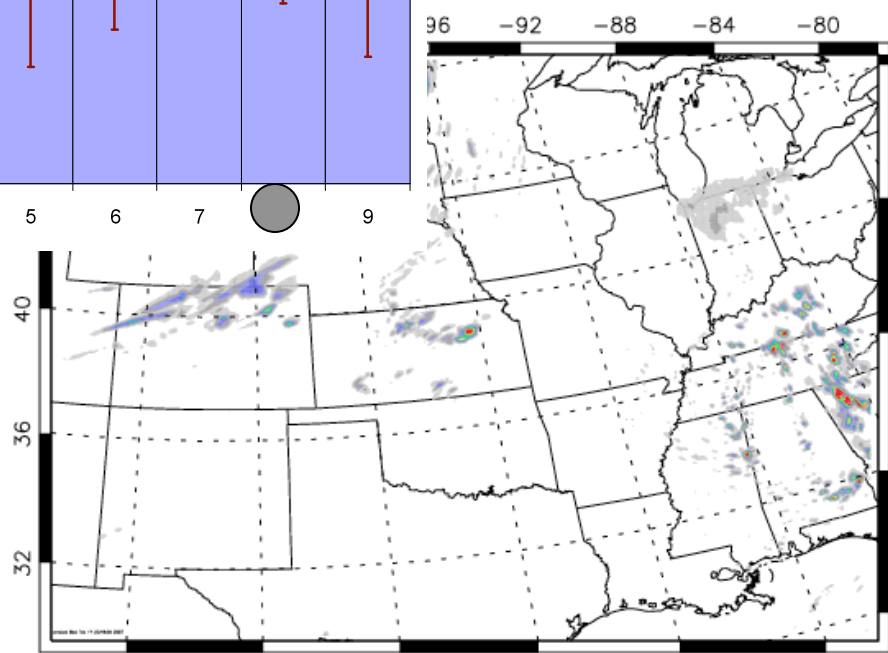
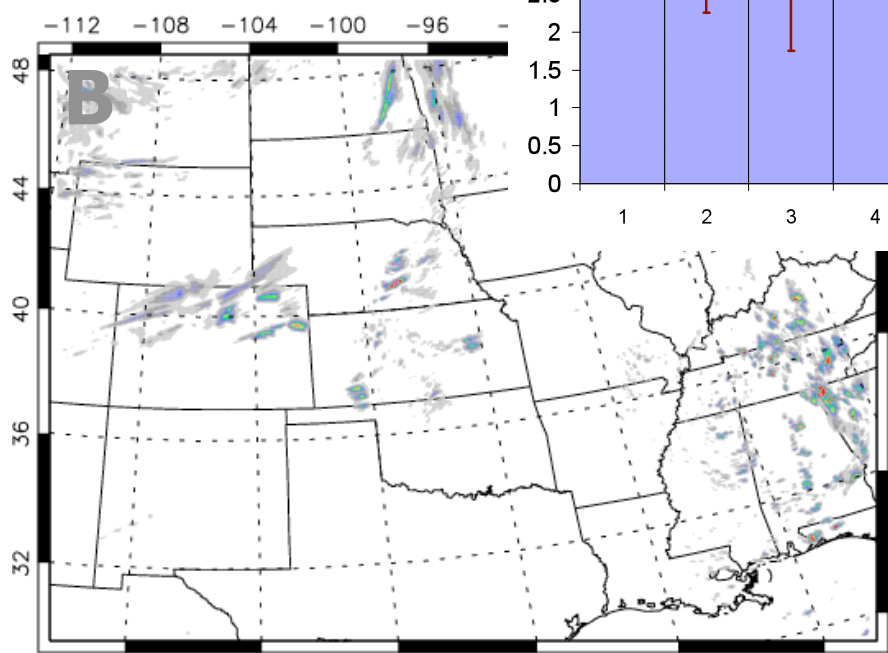
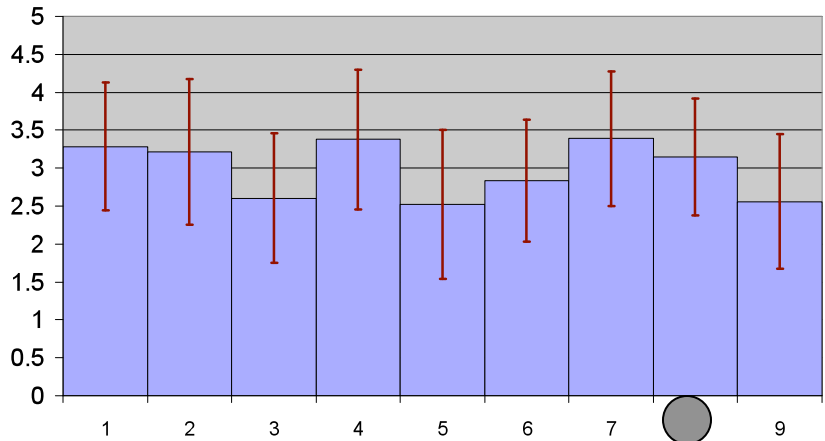
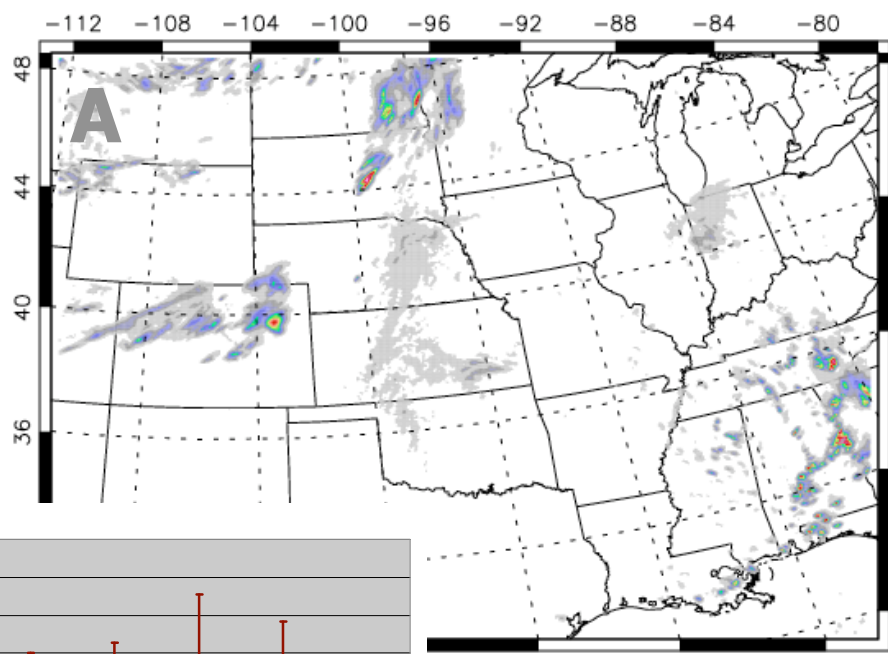
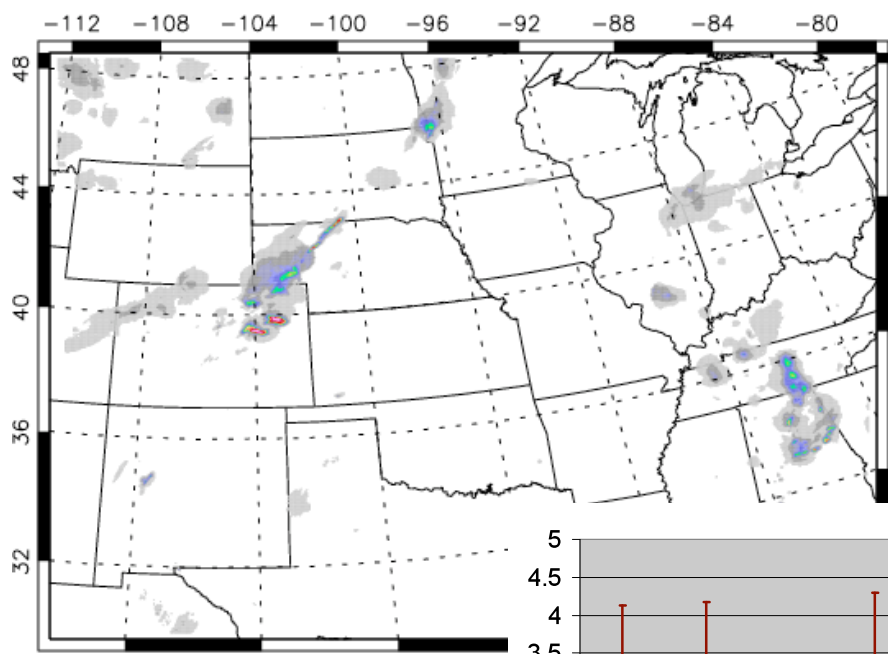
25 May 2005



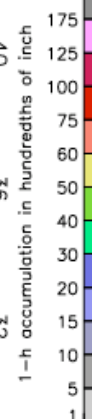
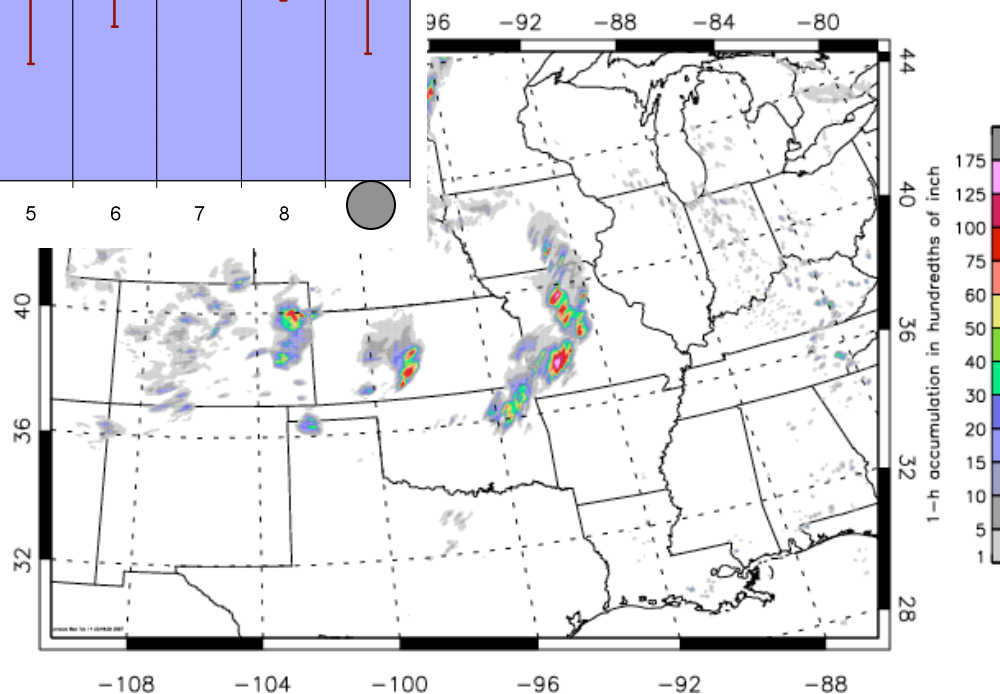
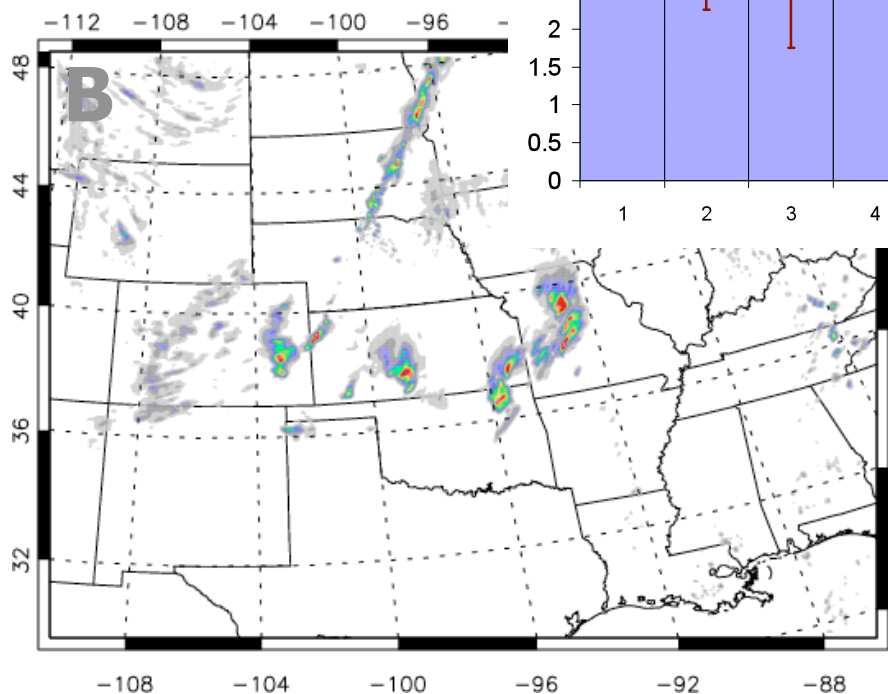
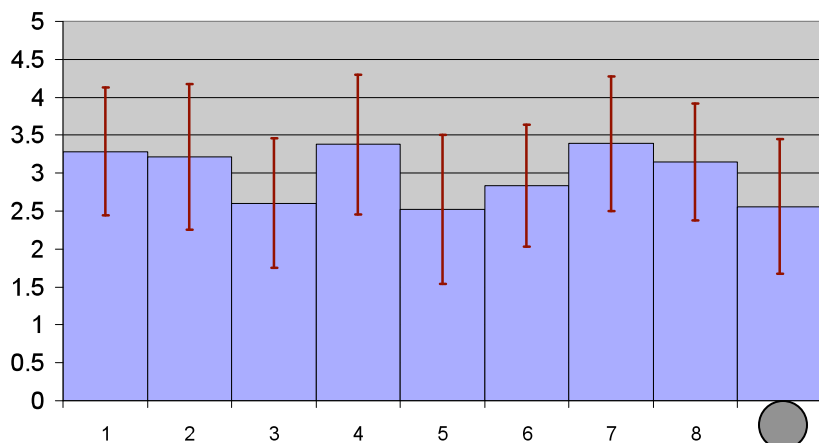
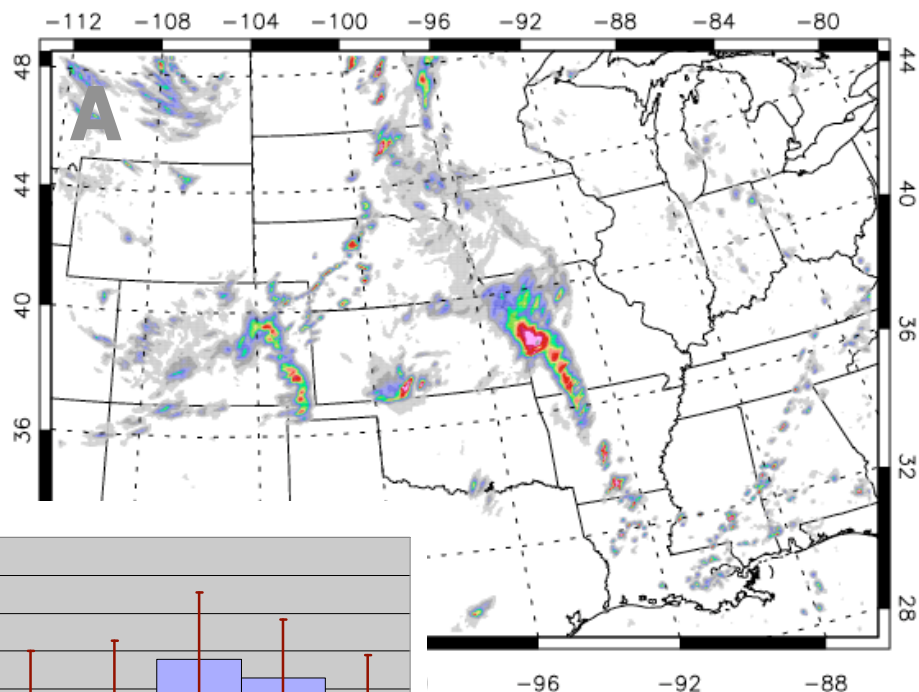
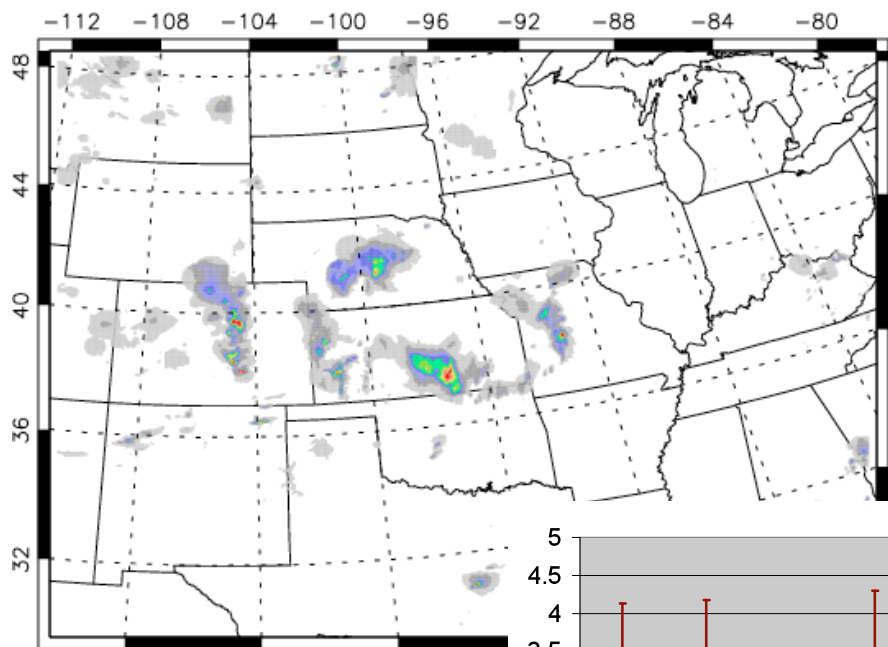
1 June 2005

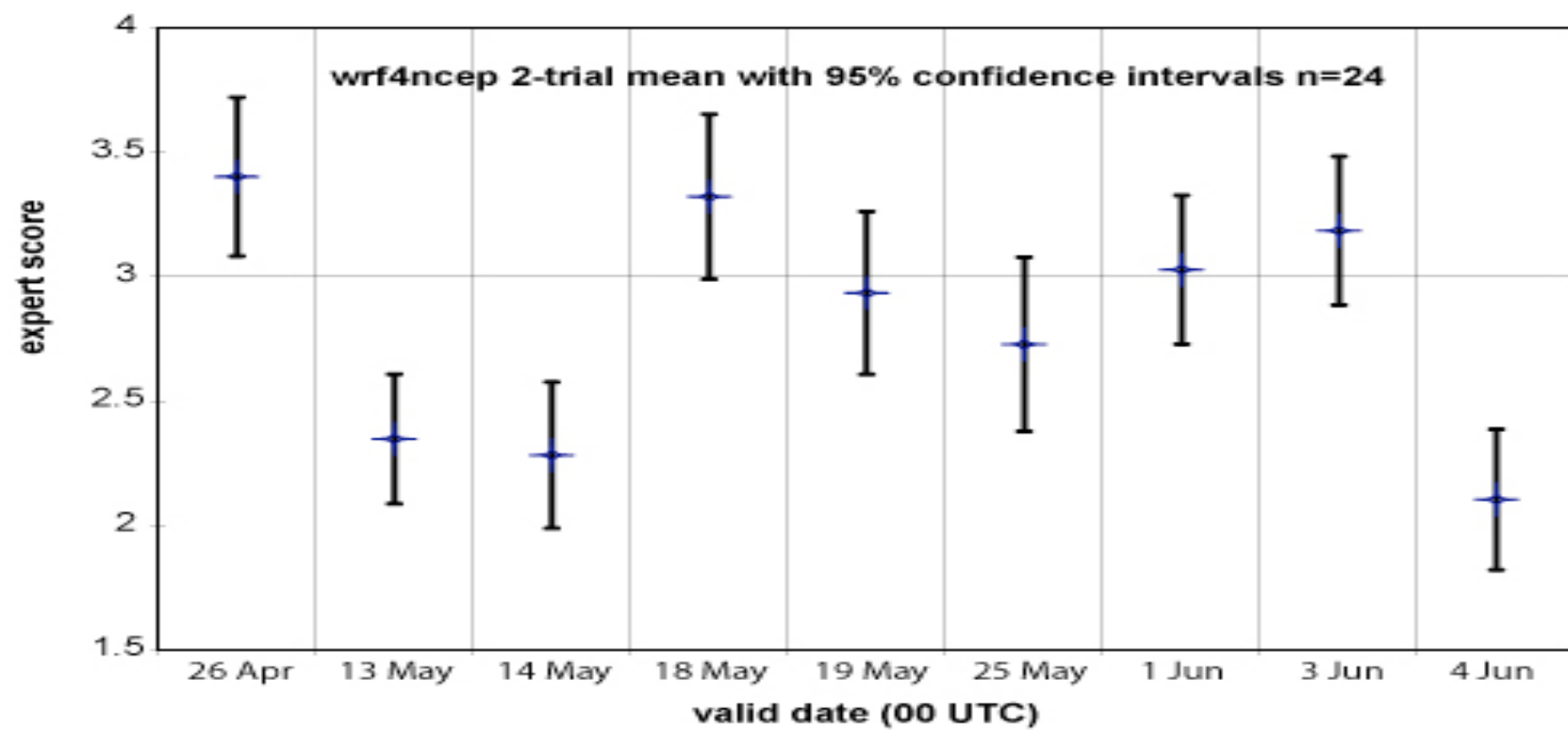


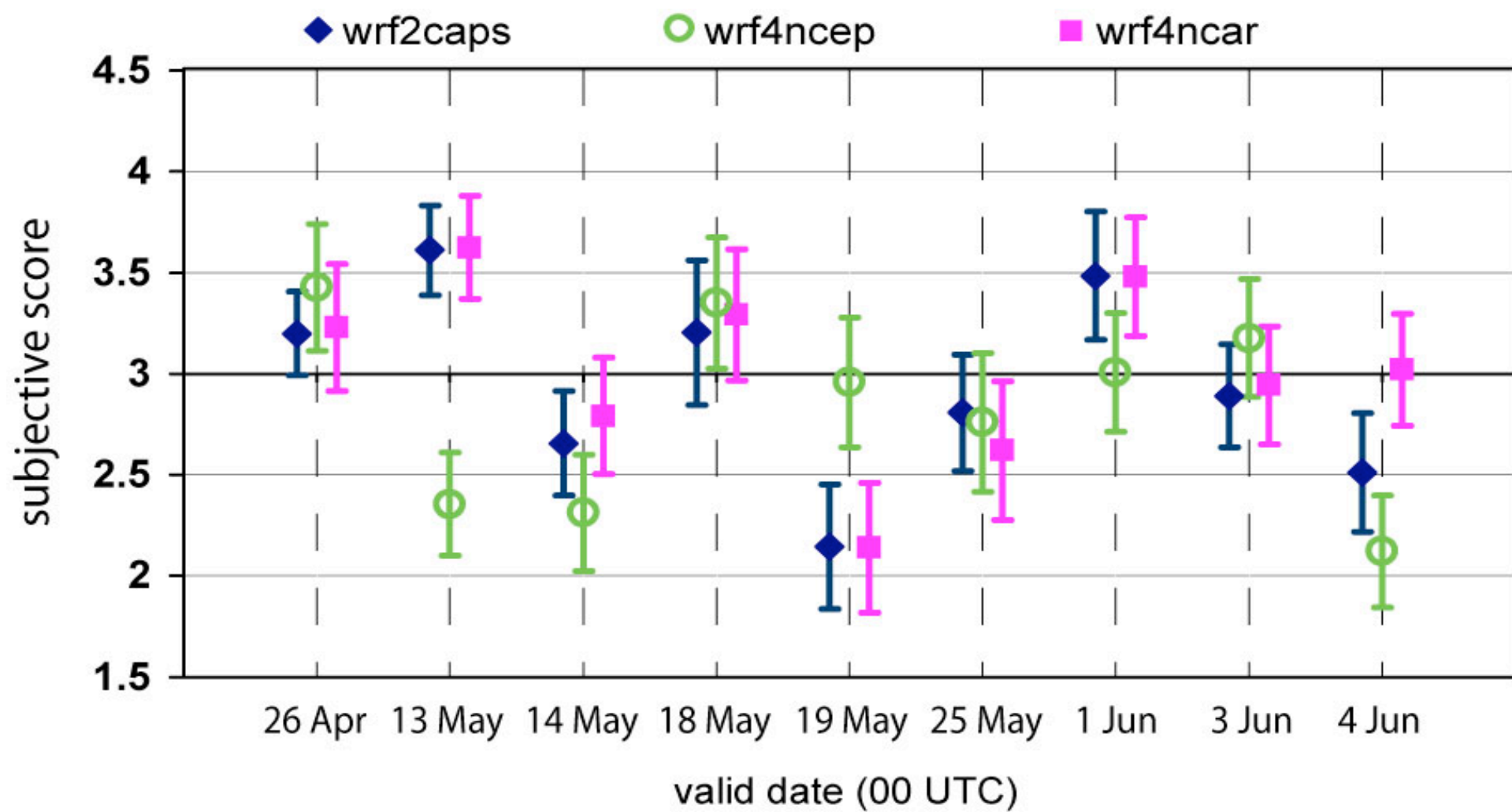
3 June 2005

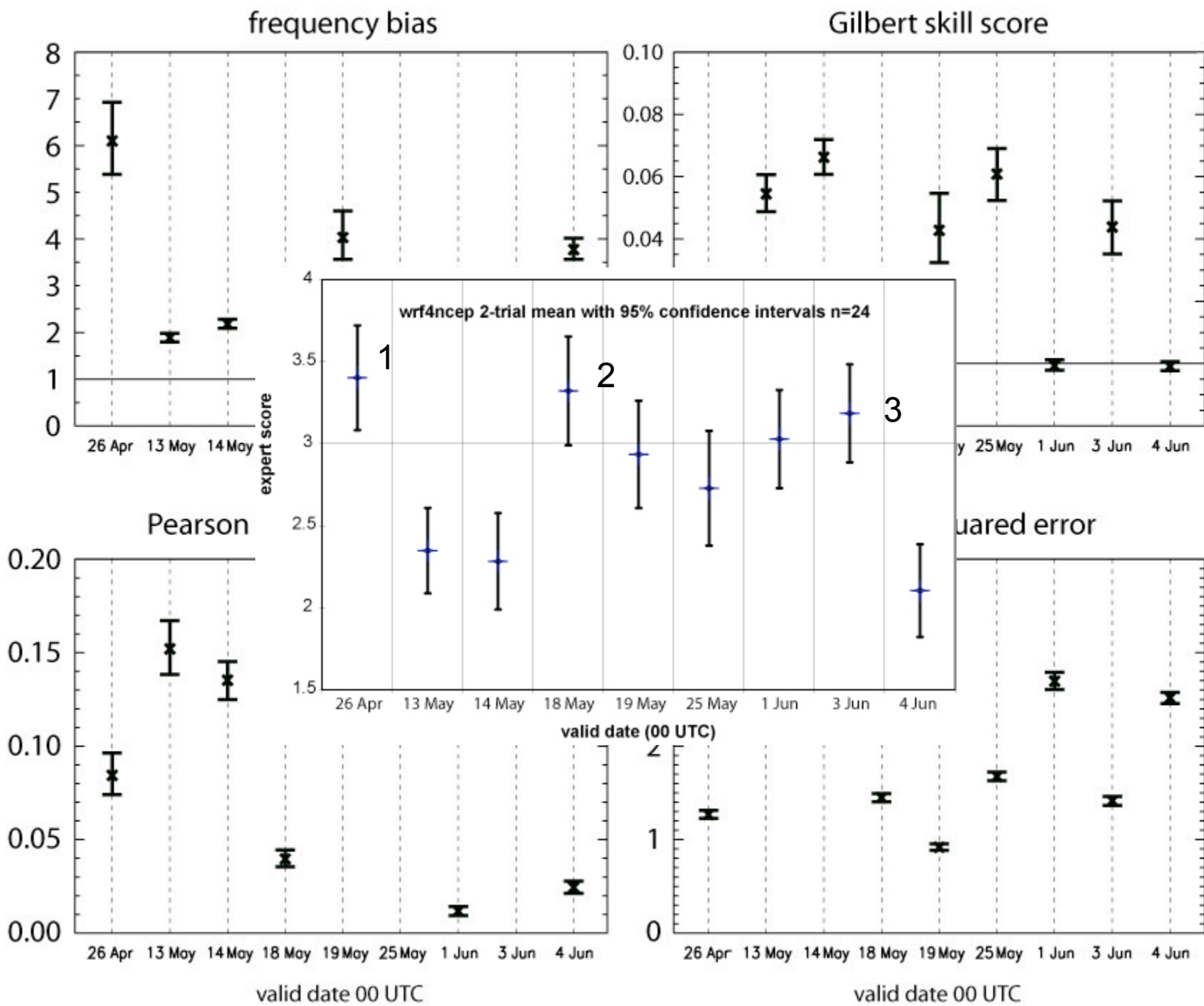


4 June 2005

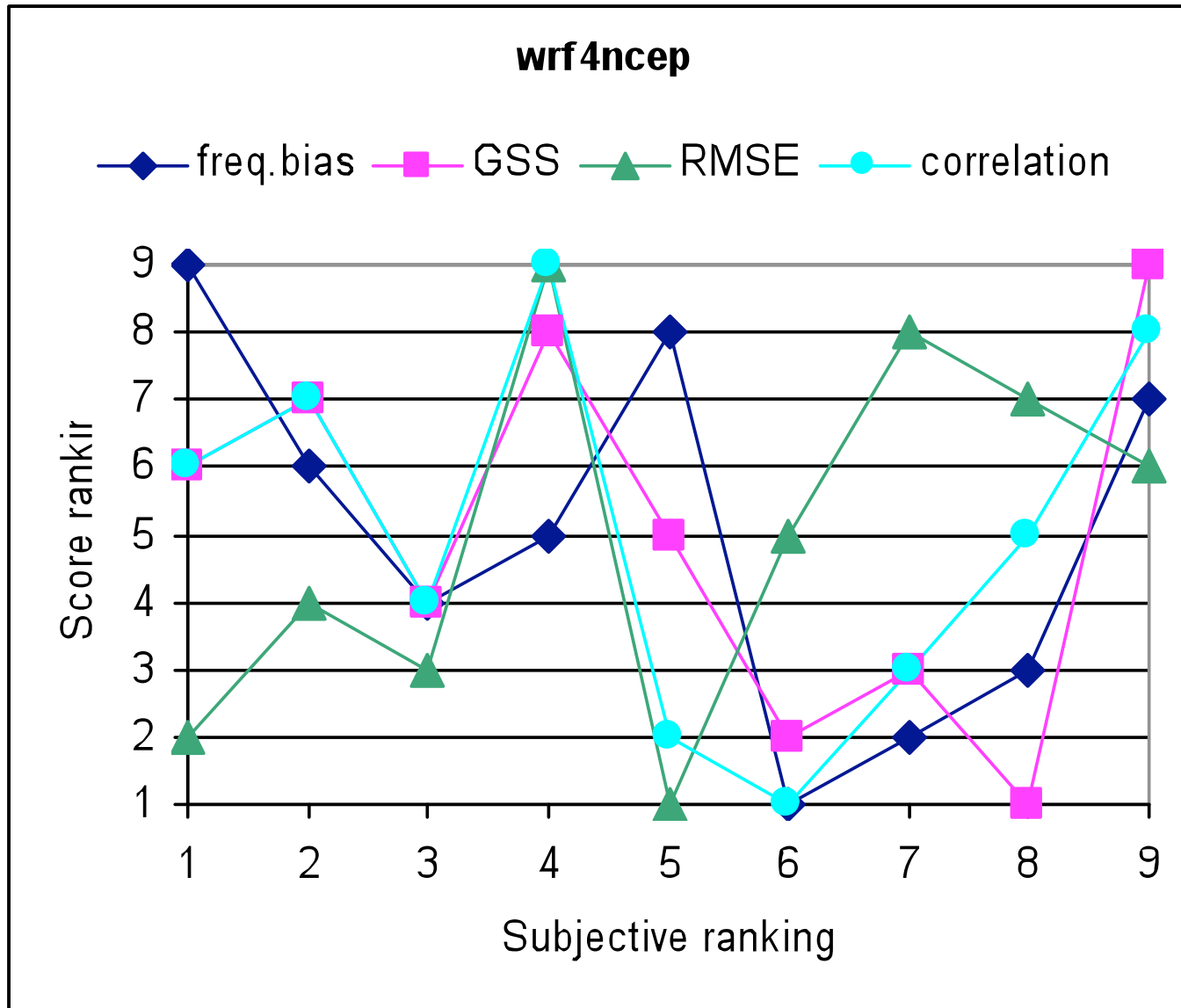








subjective rank vs traditional rank



wrf4ncep

